

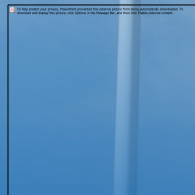
New challenges and opportunities for measuring impact and additionality

# EIB value added framework



European  
Investment  
Bank

*The EIB bank*



30 June 2020

Online Workshop on measuring  
impact and additionality

# Achieving impact through additionality

## *EIB value added framework*



- **Eligibility** ensures that EIB operations fall within its remit:
  - Public Policy Goals
- **Additionality** ensures that EIB support makes a difference
  - facilitating projects through advice and financing
  - in a way that the market alone would not deliver to the same extent or in the same timeframe
- with the intent to contribute to measurable positive social, economic and environmental **impact ...**

# The way we assess the additionality of our operations

*EIB operations are underpinned by 3 pillars*



## 1. WHY

- Address investment gaps resulting from market failures

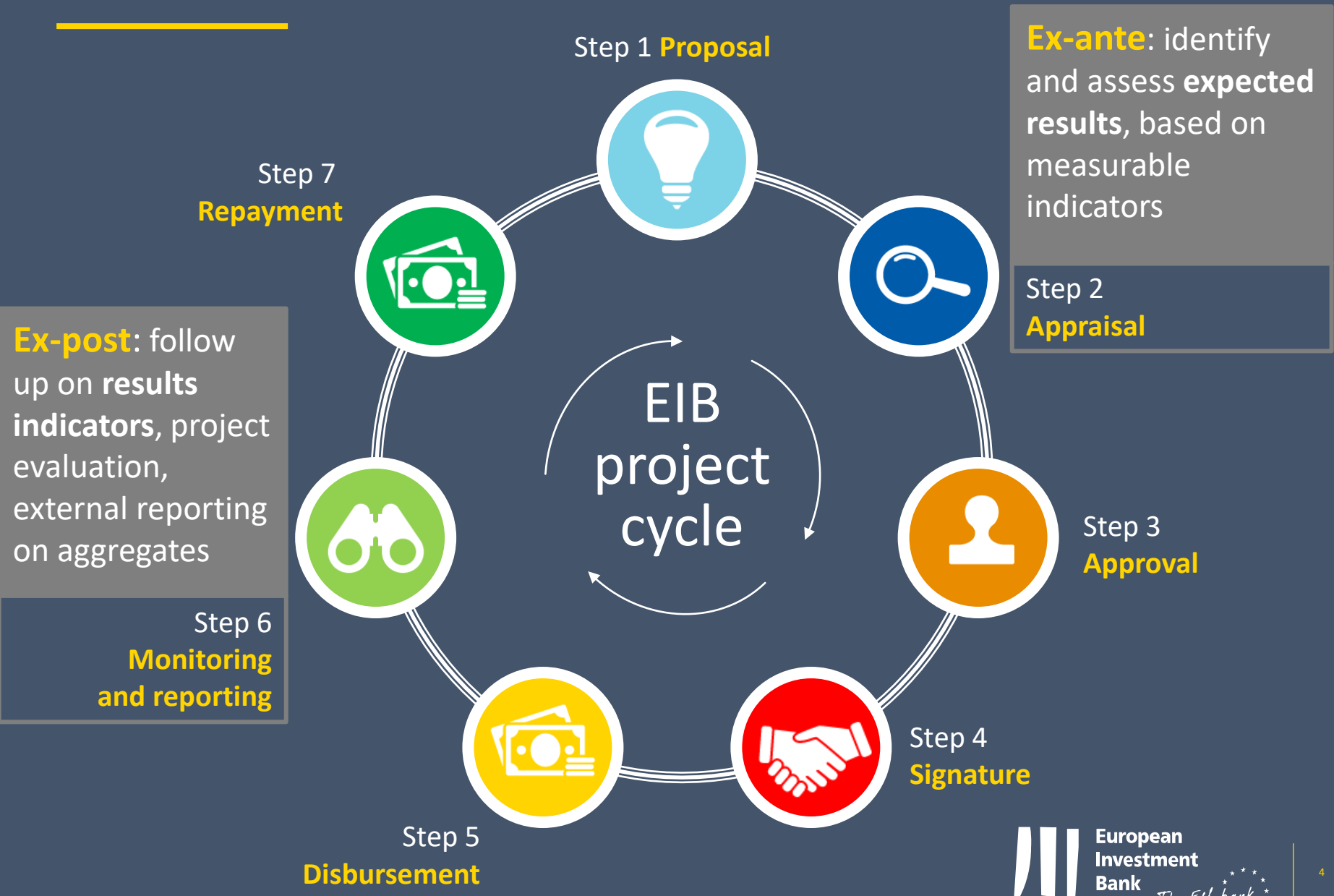
## 2. WHAT

- Influence the investment activity undertaken (in terms of scale, scope, structure, quality or time) to alleviate the investment gaps

## 3. HOW

- Complement what is available from other sources of financing and technical assistance









# Assessing additionality and impact over the project cycle



# We deliver impact where it's needed

The EIB has started tracking its SDG contributions since 2016 by mapping sector-oriented project monitoring indicators to the specific targets underlying the SDGs



	<b>Good Health and Wellbeing</b>	Citizens benefiting from improved healthcare services (#)	12 million
	<b>Quality Education</b>	Students directly benefiting from EIB projects, European Union (#)	1.9 million
	<b>Affordable and Clean Energy</b>	Households to be powered with clean electricity (#)	7 million
		Electricity generation capacity from renewable energy sources	12 900 MW
	<b>Decent Work and Economic Growth</b>	Time savings (hours/year)	190 million
	<b>Industry, Innovation and Infrastructure</b>	Additional annual trips made on EIB-financed public transport (#)	631 million
	<b>Sustainable Cities and Communities</b>	Households in new or refurbished social or affordable housing (#)	over 100 000
	<b>Responsible Consumption and Production</b>	Population served by new waste collection and treatment facilities (persons)	9 million
	<b>Climate Action</b>	Absolute emissions (in Mt CO <sub>2</sub> e/year)	3.9
		Relative emissions (in Mt CO <sub>2</sub> e/year)	-3.1
		Carbon sequestration from forestry (in Mt CO <sub>2</sub> e/year)	0.9